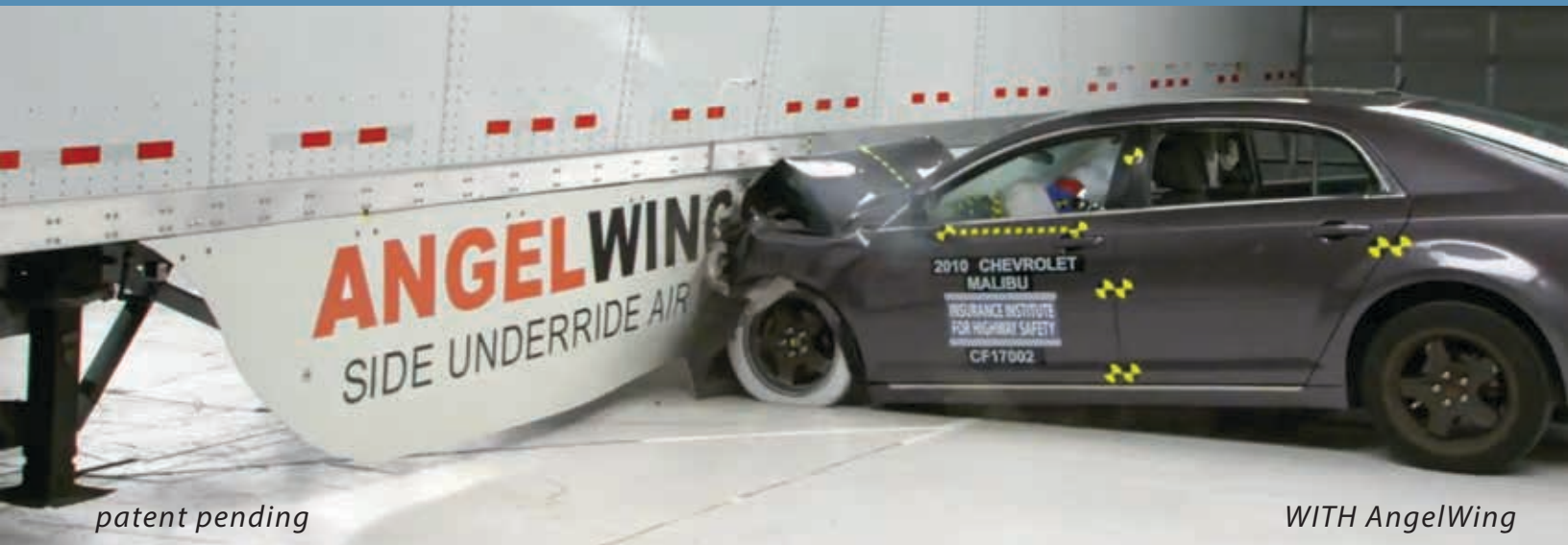


# WHICH CRASH WILL YOU HAVE?



WITHOUT AngelWing – (aero-skirt only)



WITH AngelWing

**ANGELWING**® by



**Lightweight • Retrofittable • Vans • Flatbeds • Container Chassis**

**“Highway Safety Institute Backs Side Underride Guards for Trailers”**

*– Transport Topics, May 11, 2017*

866-717-8737 | [info@airflowdeflector.com](mailto:info@airflowdeflector.com)  
[www.airflowdeflector.com/angelwing\\_underride](http://www.airflowdeflector.com/angelwing_underride)

## Safety Experts Recommend AngelWing<sup>®</sup>

Side underride guards are recommended by the Insurance Institute for Highway Safety (IIHS) and by the National Transportation Safety Board (NTSB). Their data shows that of the serious or fatal injuries caused by impacting the side of a semi-trailer, 89% are considered injuries that could have been mitigated by an **AngelWing<sup>®</sup>**. In crashes without an **AngelWing<sup>®</sup>** a car's bumper will "underride" the trailer, bypassing the car's airbag mechanisms often resulting in crippling or fatal injury to the vulnerable head and neck area of the passengers (photo below). Don't let this happen. **AngelWing<sup>®</sup>** is available now.



IIHS Head Impact Video – WITHOUT AngelWing

### Tested by the IIHS

Published tests by the IIHS of **AngelWing<sup>®</sup>** at speeds up to 40 mph with instrumented dummies demonstrate that **AngelWing<sup>®</sup>**'s patent pending technology prevents serious injury to the passengers in four-wheel vehicles. In corresponding tests without an **AngelWing<sup>®</sup>** the trailer floor delivered a direct blow to the driver's head (above).

### Retrofittable and Durable

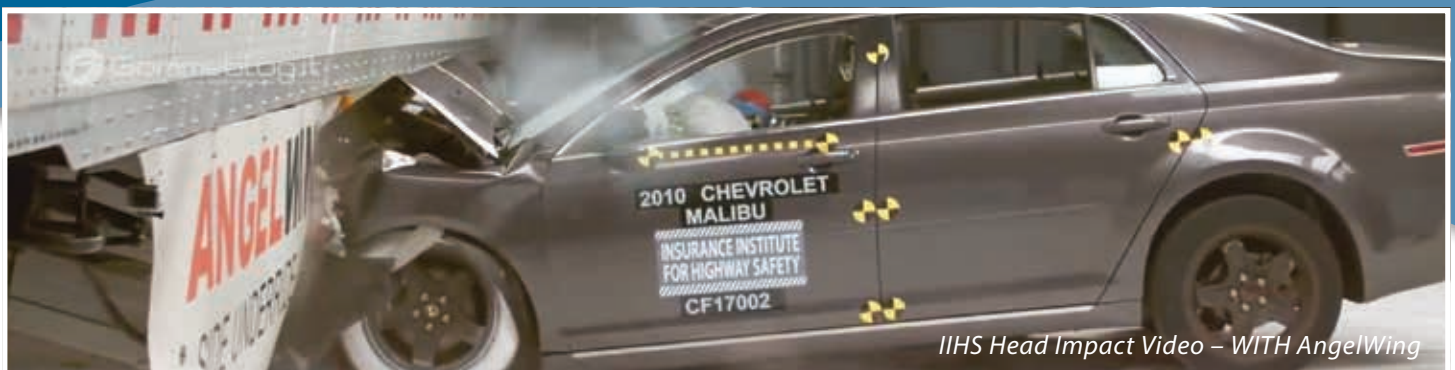
Tested to the industry's highest standards **AngelWing<sup>®</sup>**'s galvanized steel frame is engineered to last and is easily bolted to the existing trailer structure. Installation takes less than 2hrs.

### Lightweight

At about half the weight of early side guard prototypes **AngelWing<sup>®</sup>**'s engineers have reduced the weight to under 1% of GVWR for a typical tractor-trailer combination while maintaining considerable underride protection for a range of vehicles and crashes.

### Economical

Combined with a compatible skirt of your choice, **AngelWing<sup>®</sup>** is a device that will pay for itself while protecting your driver, your fleet and the four-wheelers with whom we share the road.



IIHS Head Impact Video – WITH AngelWing

866-717-8737 | [info@airflowdeflector.com](mailto:info@airflowdeflector.com)

[www.airflowdeflector.com/angelwing\\_underride](http://www.airflowdeflector.com/angelwing_underride)